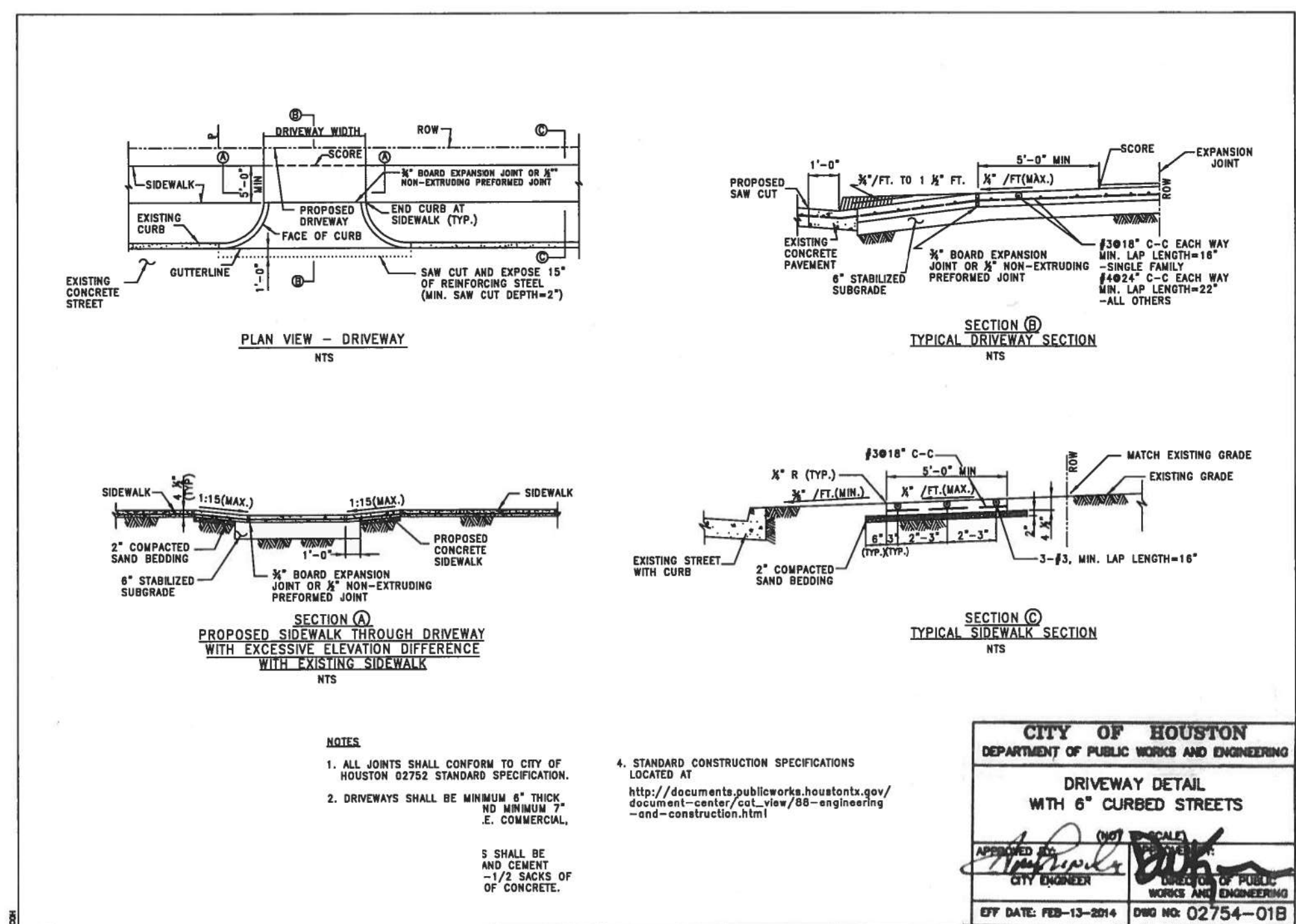


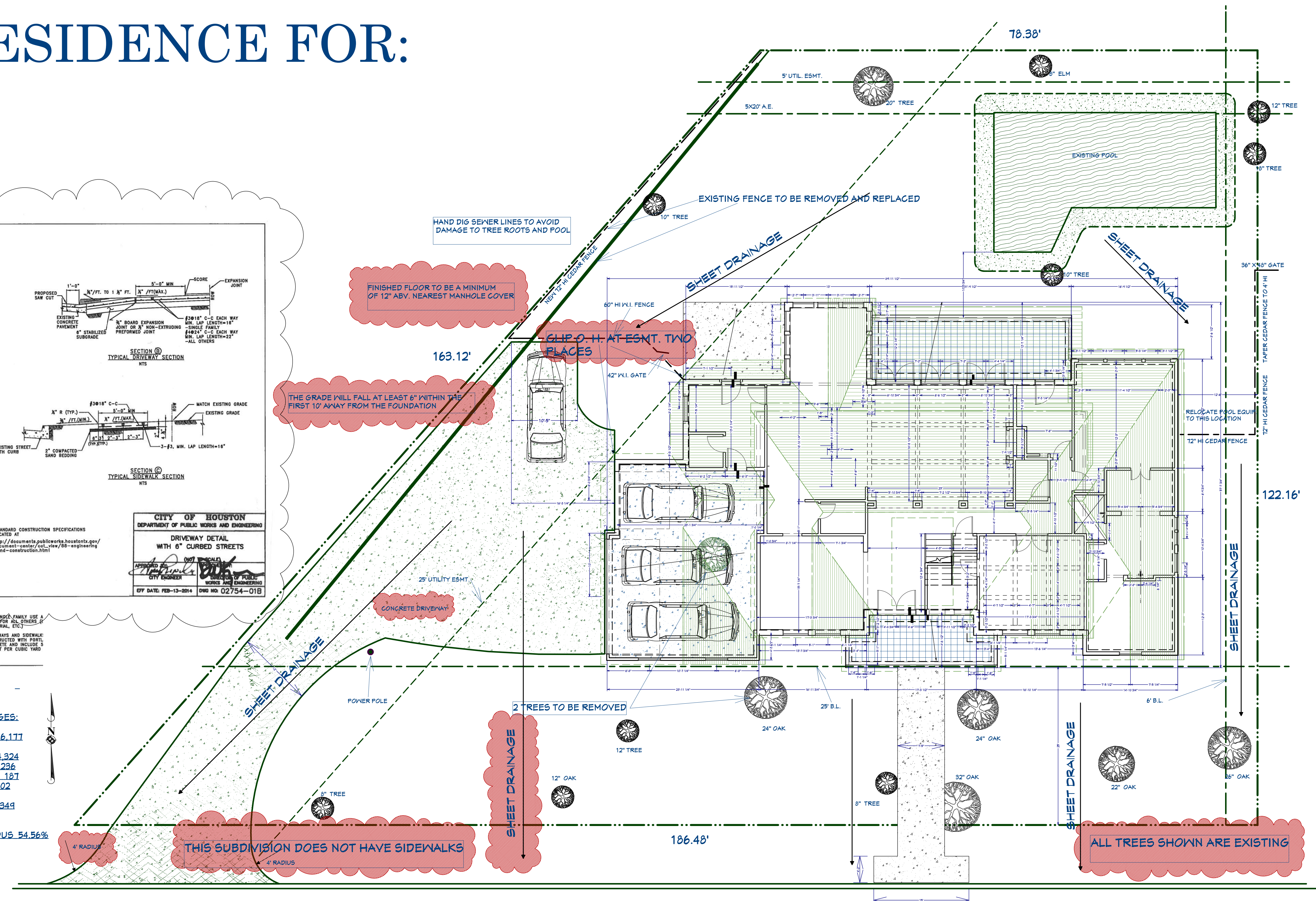
RESIDENCE FOR:



SQUARE FOOTAGES:

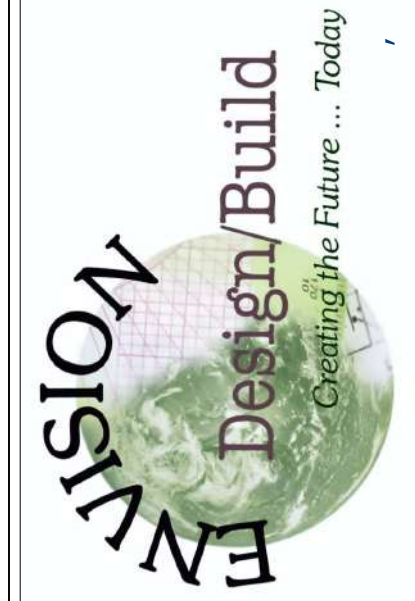
LOT SIZE	16,177
FIRST LEVEL	4,324
DRIVEWAY	2,236
FRONT WALK	187
POOL	602
TOTAL	7,349

TOTAL IMPERVIOUS 54.56%



Plot Plan View
scale 1/8"=1'-0"

800 Wilcrest suite 120
Houston, Texas 77042
PH. 713-789-8262
CELL 713-806-1498



REVISIONS	DATE
Revision #2	8-21-2020

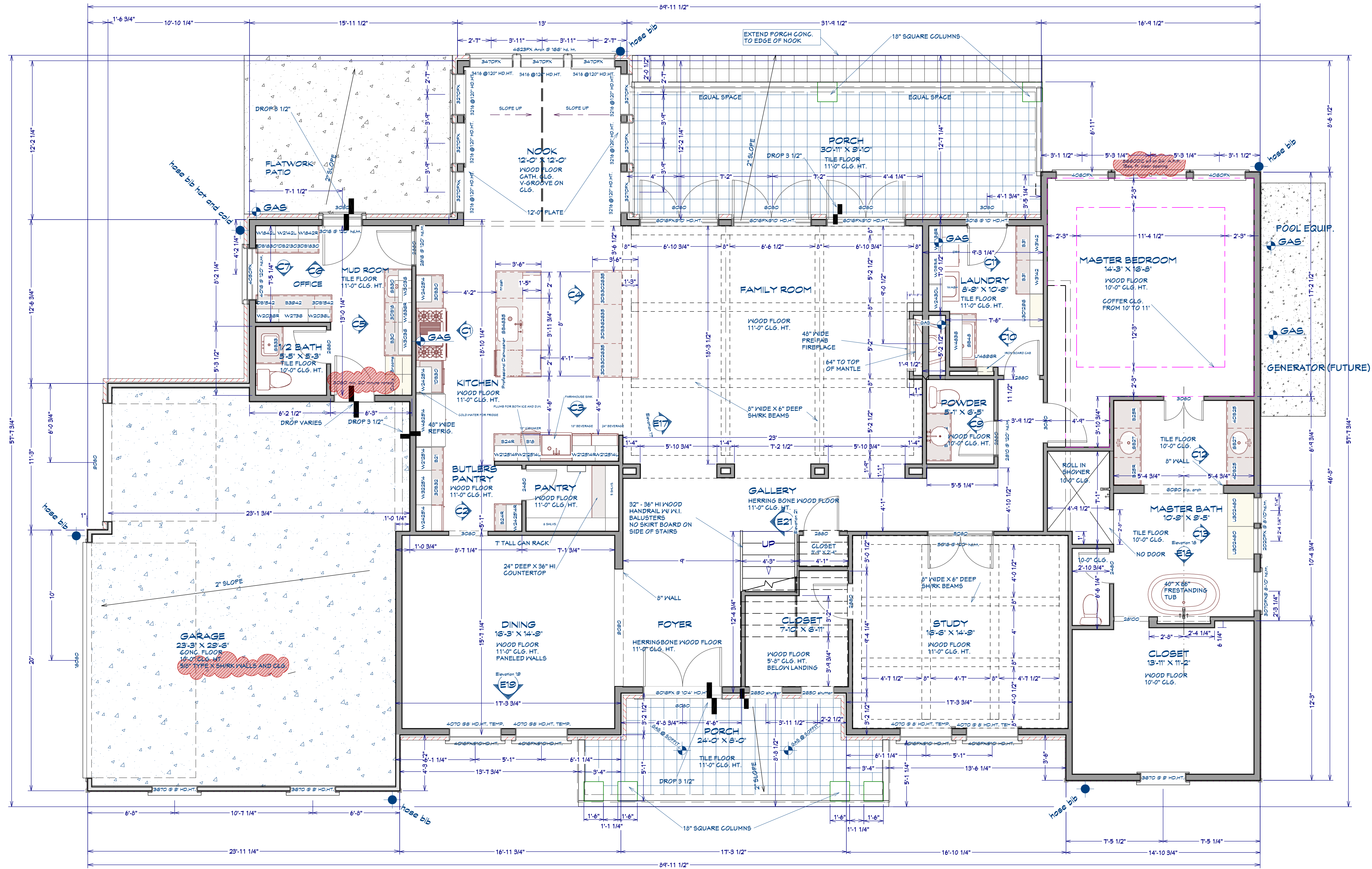
UNLESS OTHERWISE NOTED:

- 11'-0" CLG. AT FIRST FLOOR
- 10'-0" CLG. AT SECOND FLOOR
- 1X12" BASE AT FIRST FLOOR
- 1X10" BASE AT SECOND FLOOR
- CM 50 CROWN WITH CRADLE FIRST AND SEC. FLOOR
- KERFED JAMBS AT DOORS, NO CASING, 3/8" BULLNOSE
- 1/2" SH/RK WALLS AND CLG.
- 5/8" SH/RK WALLS AND CLG. IN GARAGE
- SQUARE SH/RK RETURNS AT WINDOWS AND CORNERS
- 1 3/8" S.C. INT. DOORS
- 1 3/4" S.C. EXT. DOORS
- TANKLESS WH. IN ATTIC
- 14" DEEP UPPER CABINETS IN KITCHEN & BUTLERS

SQUARE FOOTAGE:

FIRST FLOOR	2987
SECOND FLOOR	1562
TOTAL LIVING AREA	4549
GARAGE	745
PORCHES	492
TOTAL COVERED AREA	5786
56% BRICK AT EXTERIOR WALLS	

THIS PROJECT SHALL COMPLY WITH 2012 IRC WITH COH AMENDMENTS
 2012 UMC
 2012 UPC
 2017 NEC
 2012 IFC
 2015 INTERNATIONAL ENERGY CONSERVATION CODE



1st Floor

Date:
12-20-2020

800 Wilcrest suite 120
Houston, Texas 77042
PH. 713-789-8262
CELL 713-806-1448

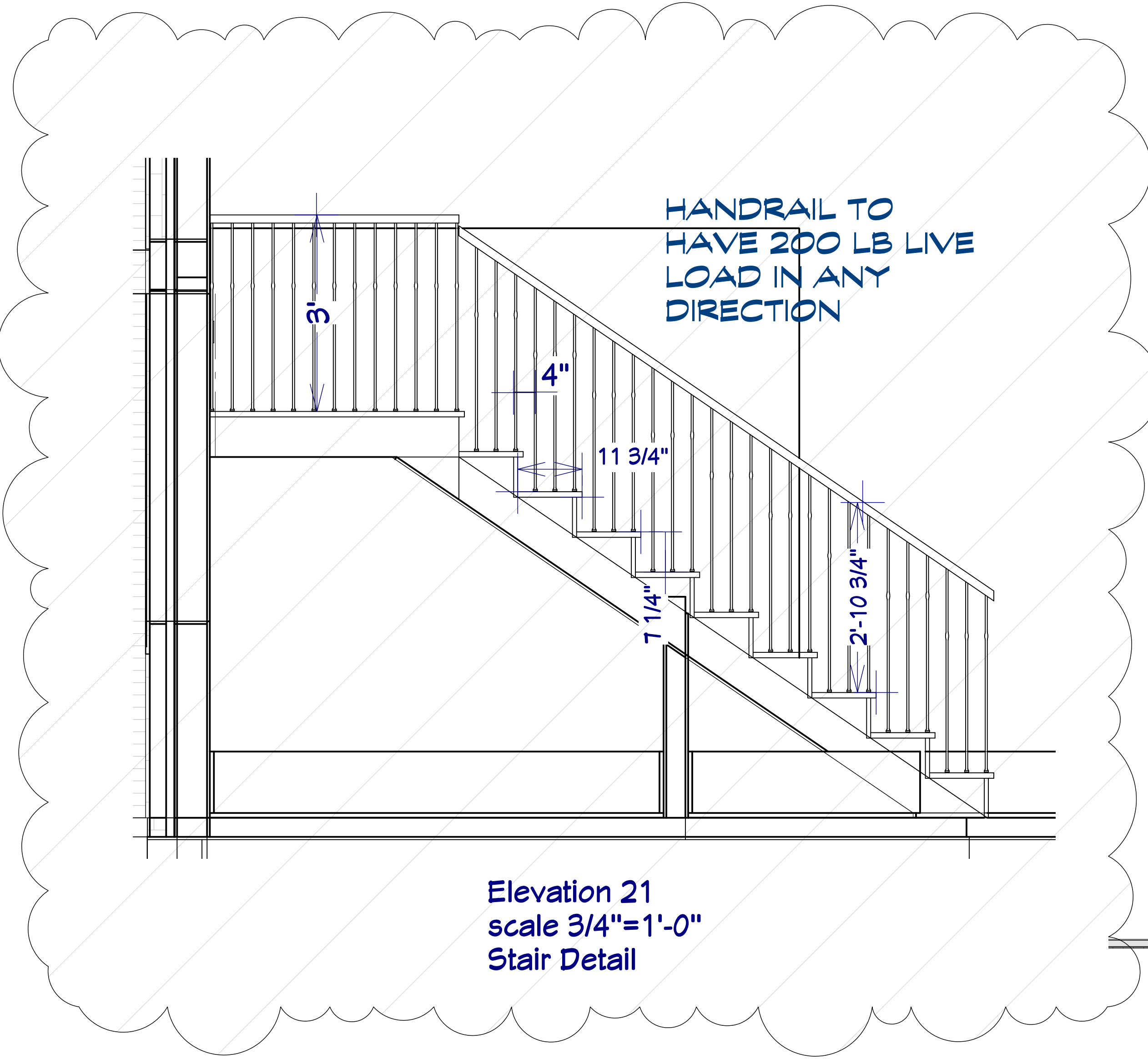


REVISIONS

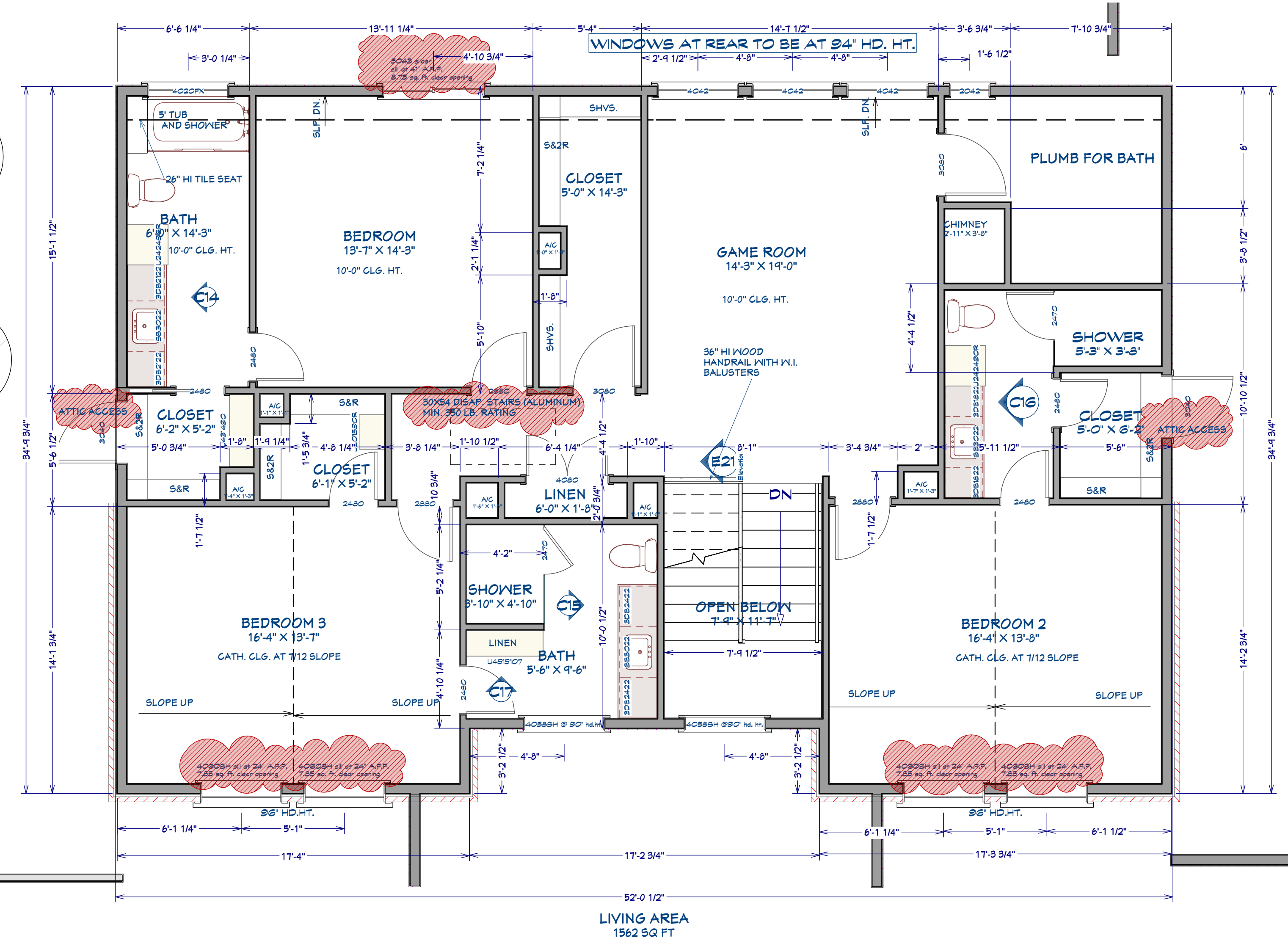
DATE

Revision #2

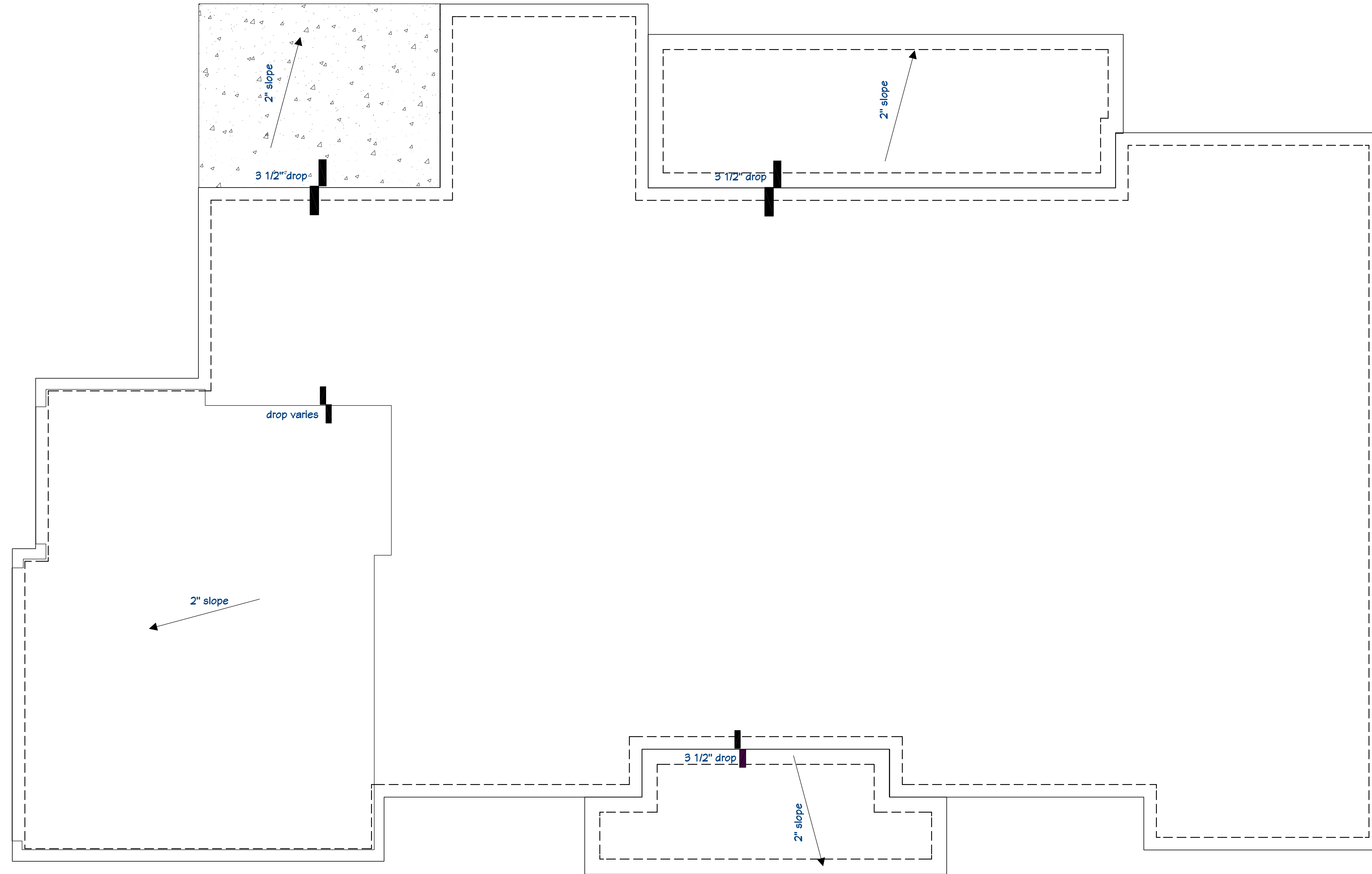
8-21-2020



Elevation 21
scale 3/4"=1'-0"
Stair Detail

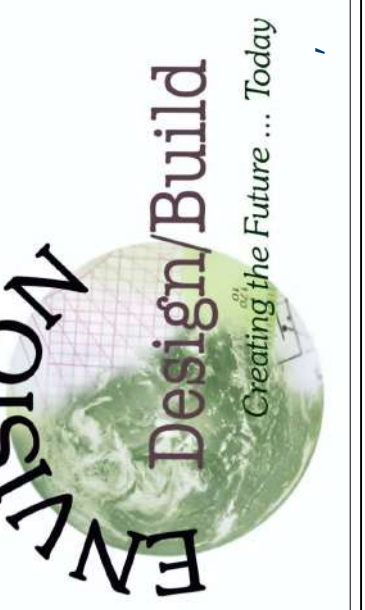


2nd Floor Plan
scale 1/4"=1'-0"



Foundation Plan
scale 1/4"=1'-0"
SEE ENGINEERS PLAN

800 Wilcrest suite 120
Houston, Texas 77042
PH. 713-789-8262
CELL 713-806-1998



REVISIONS

DATE

Revision #2

8-21-2020

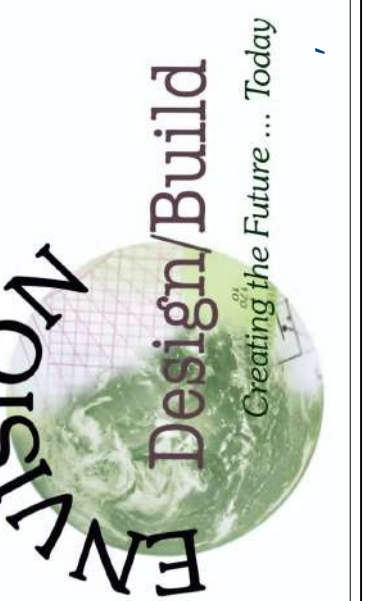


South Elevation

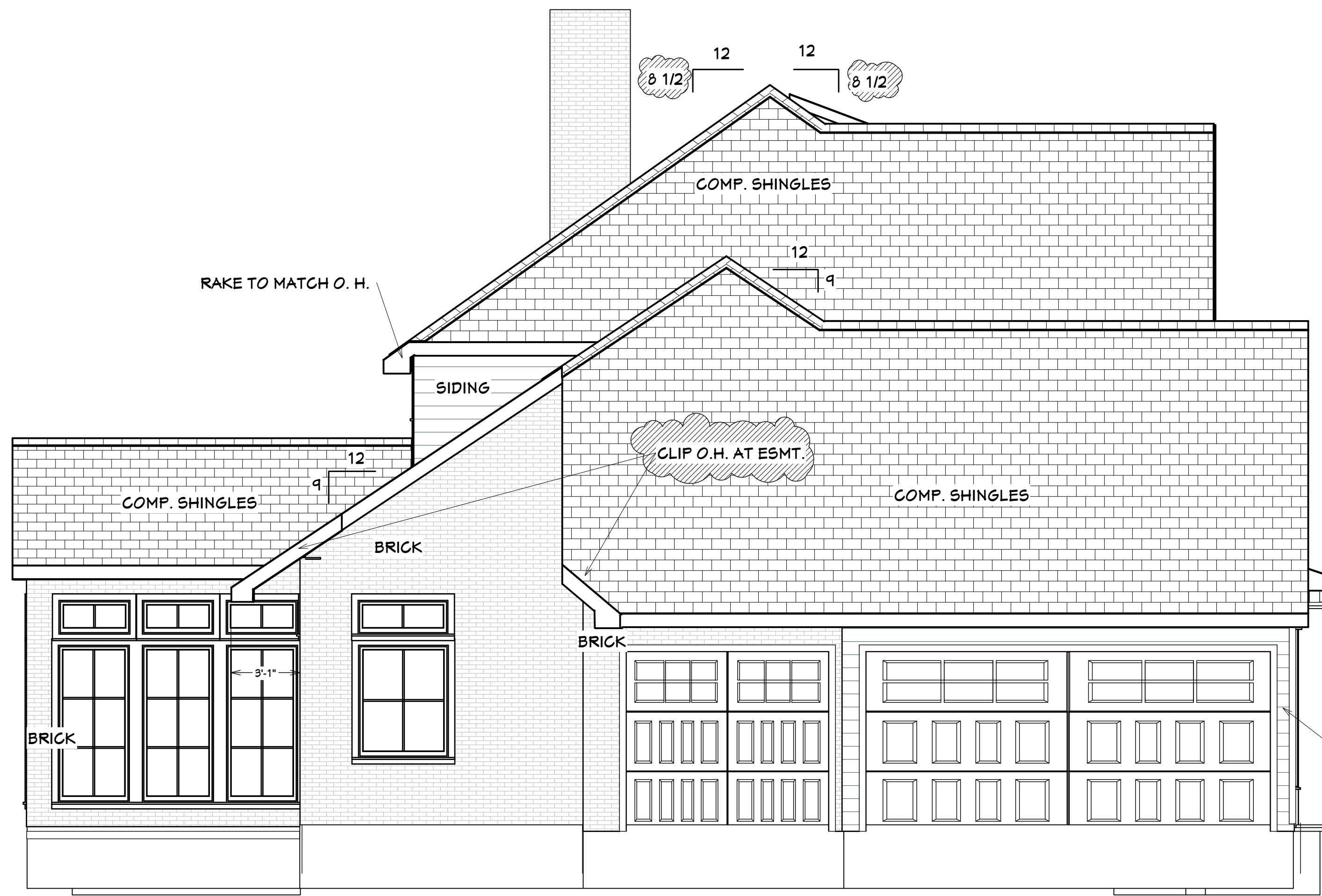


North Elevation

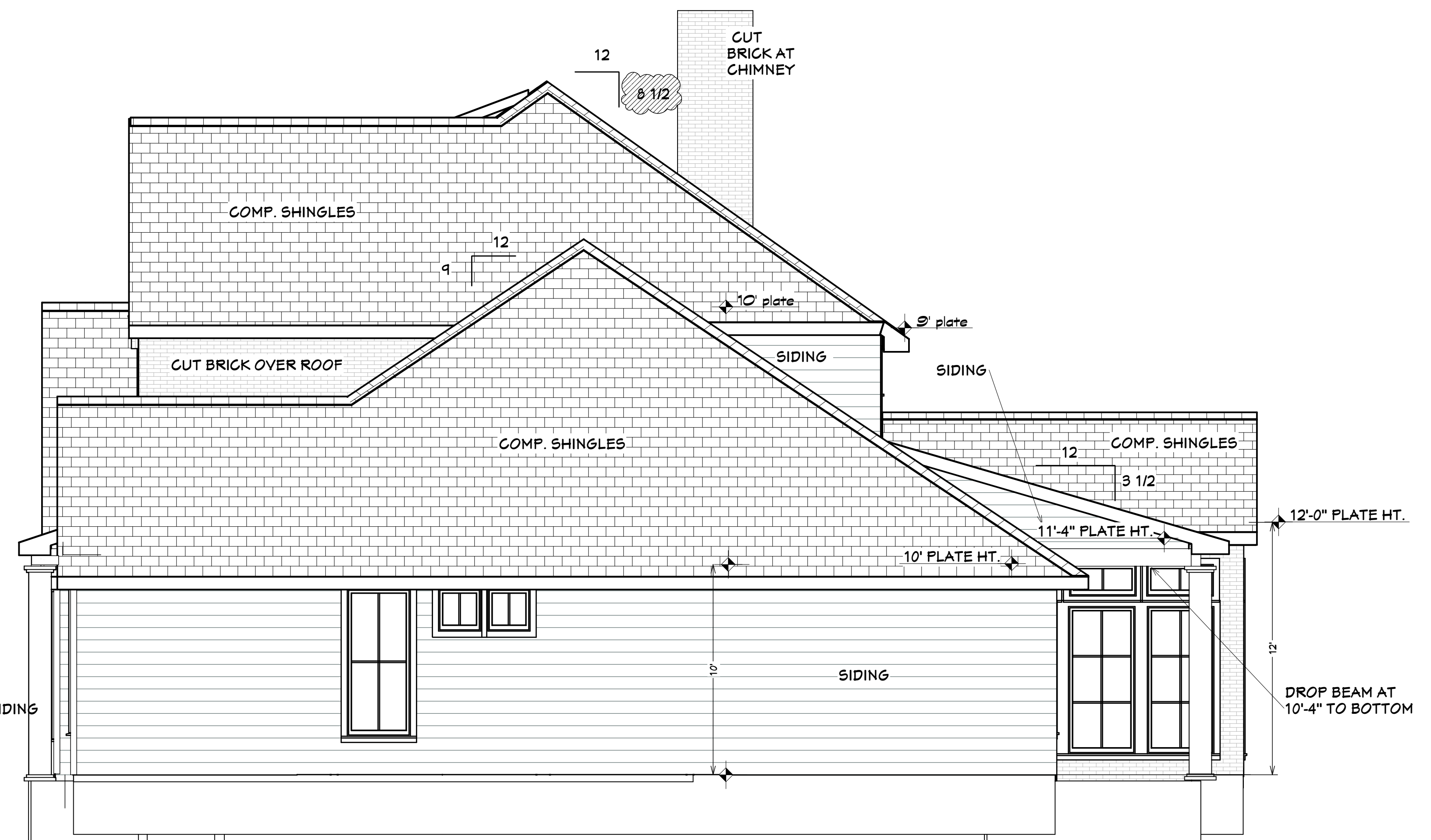
800 Wilcrest suite 120
Houston, Texas 77042
PH. 713-789-8262
CELL 713-806-1998



REVISIONS	DATE
Revision #2	8-21-2020

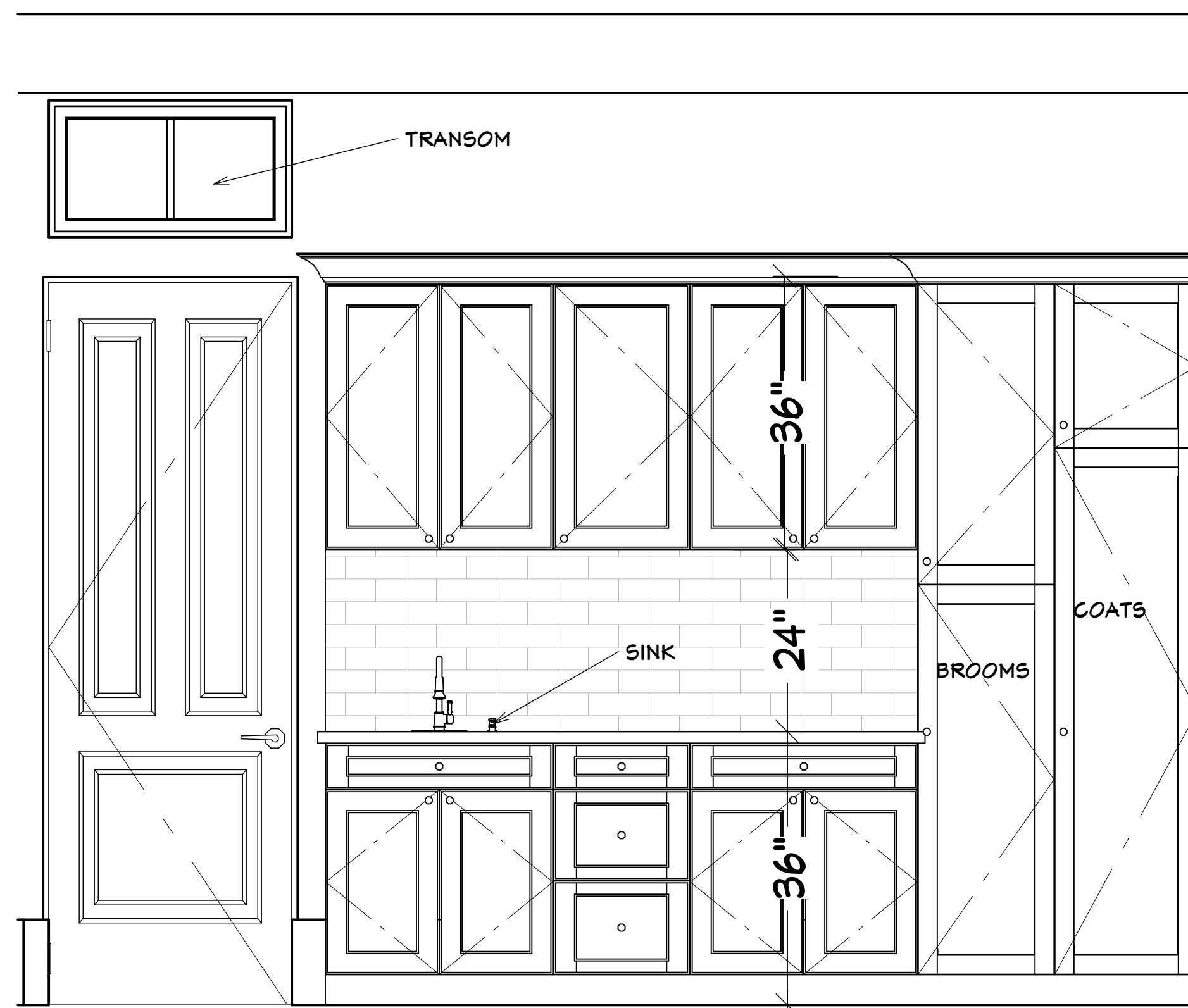


West Elevation
scale 1/4"=1'-0"

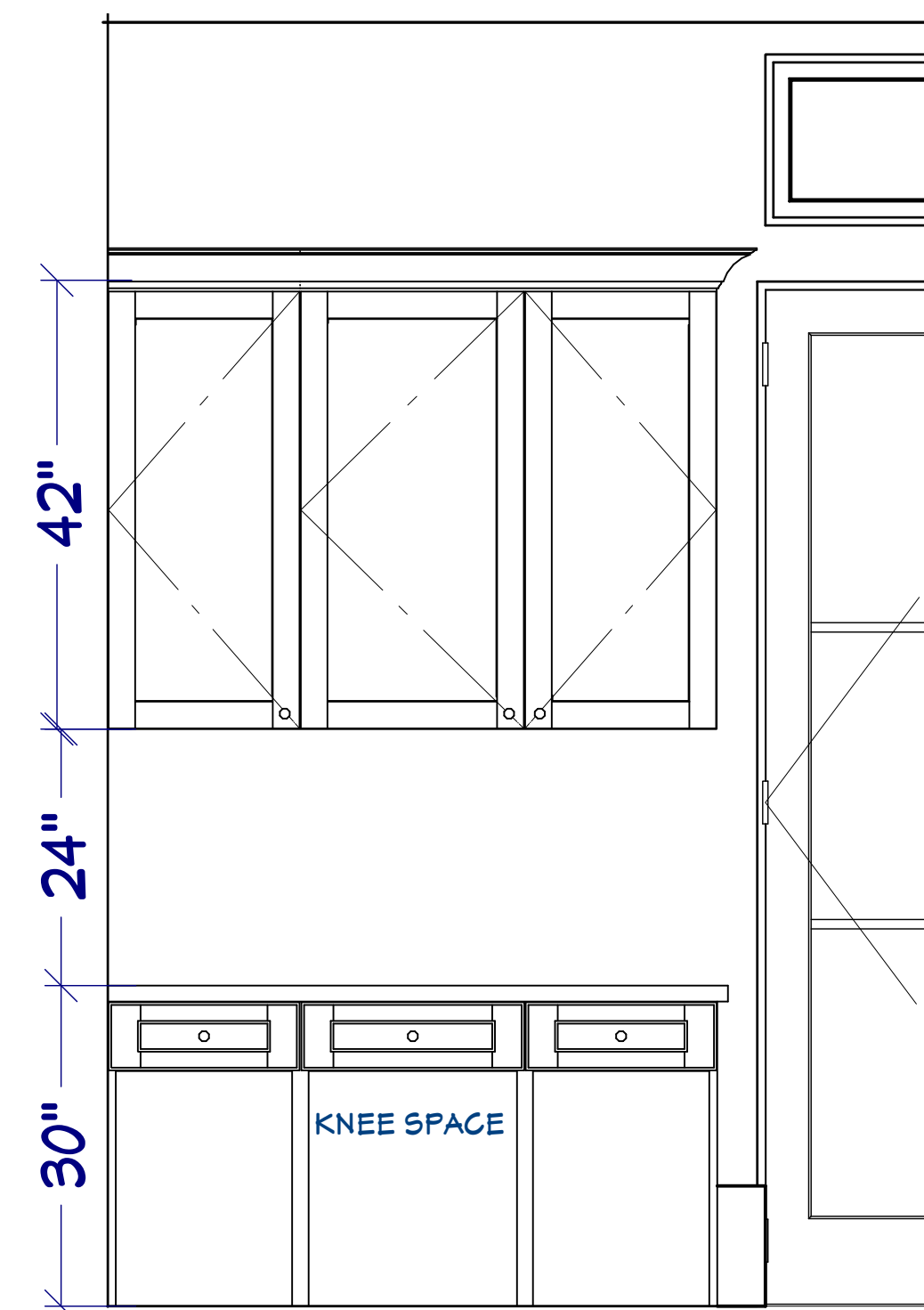


East Elevation
scale 1/4"=1'-0"

Interior Cabinets
scale 3/4"=1'-0"



C5

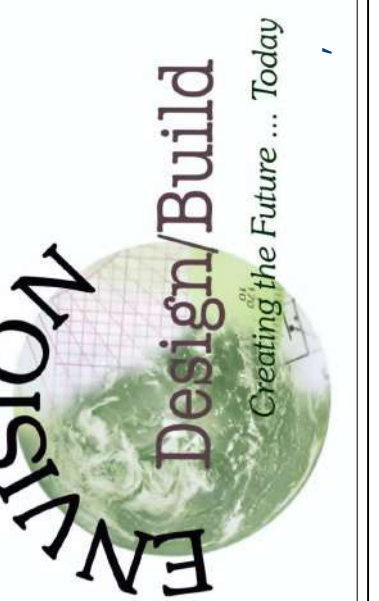


C6



C7

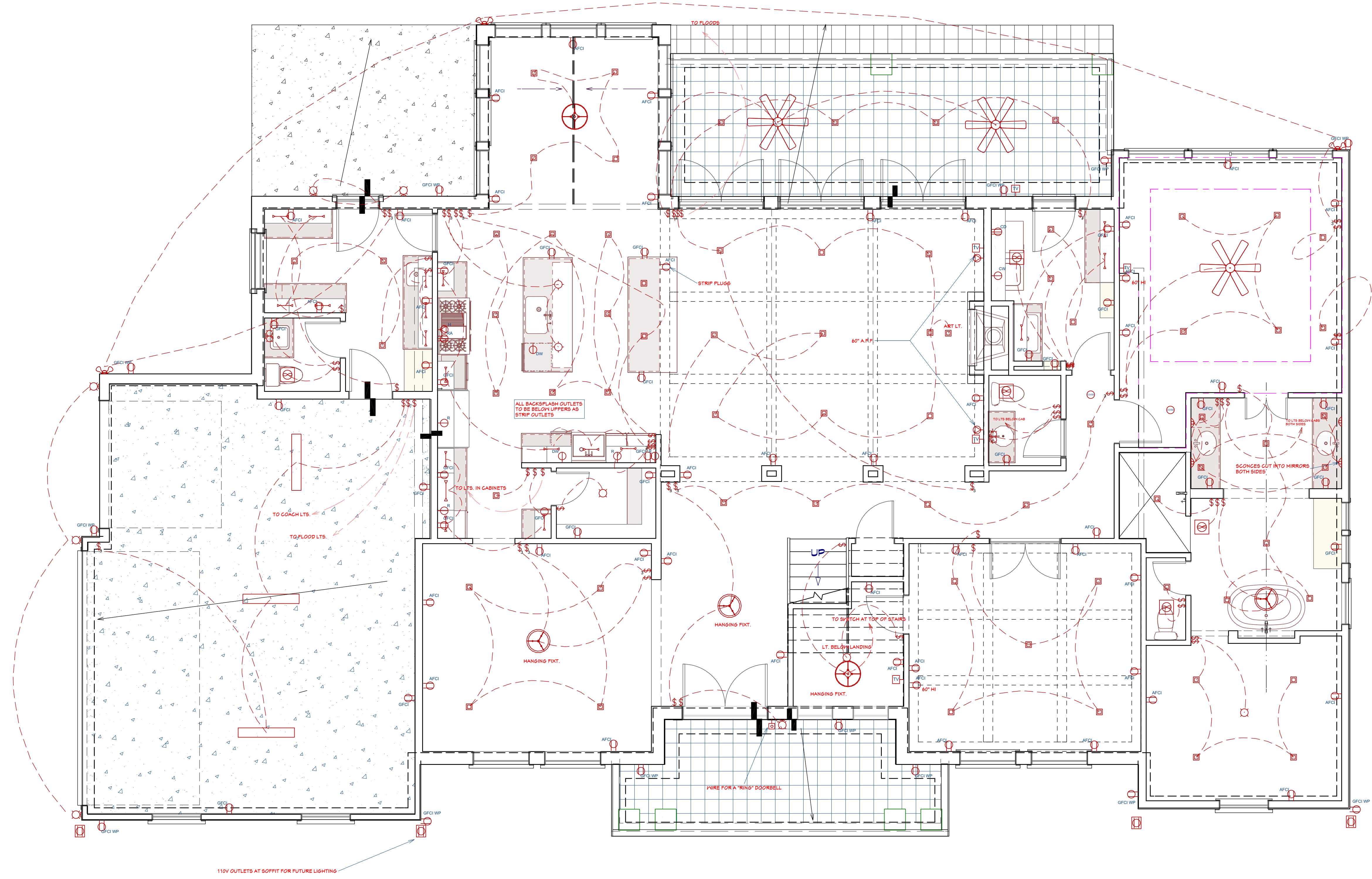
800 Wilcrest suite 120
Houston, Texas 77042
PH. 713-789-8262
CELL 713-806-1998



REVISIONS	DATE
Revision #2	8-21-2020

ELECTRICAL NOTES:

OUTLETS TO BE HORIZONTAL IN BASEBOARDS FIRST AND SECOND FLOOR
SMOKE DETECTORS TO BE 110V WITH BATTERY BACKUP AND INTERCONNECTED
PLUGS IN BOTTOM OF UPPER CABINETS THROUGHOUT



F. F. Electrical Plan View
scale 1/4"=1'-0"

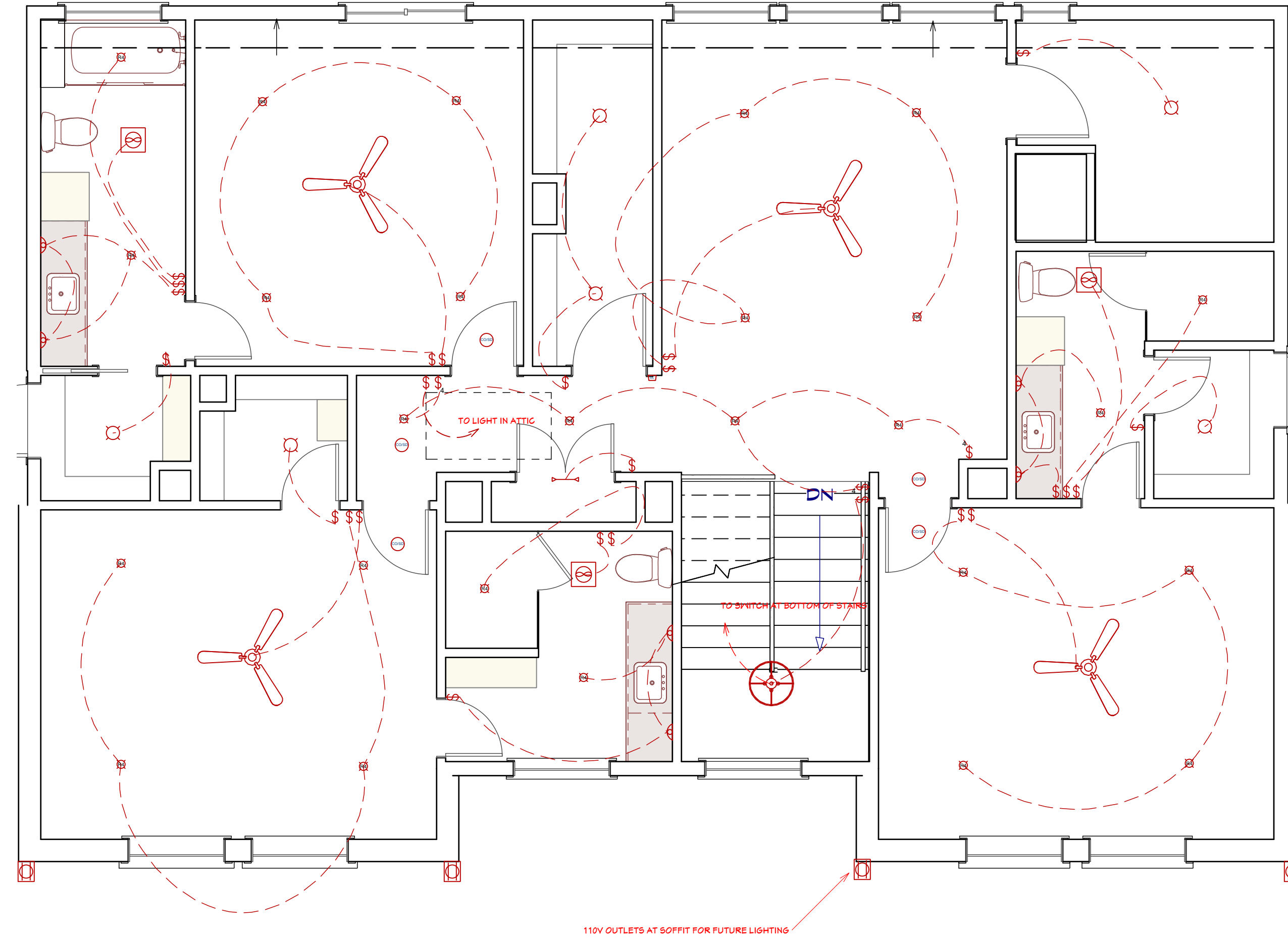
800 Wilcrest suite 120
Houston, Texas 77042
PH. 713-789-8262
CELL 713-806-1498



DATE
8-21-2020

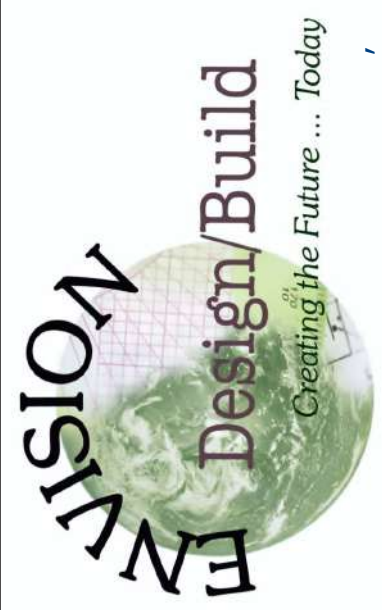
Revision #2

REVISIONS

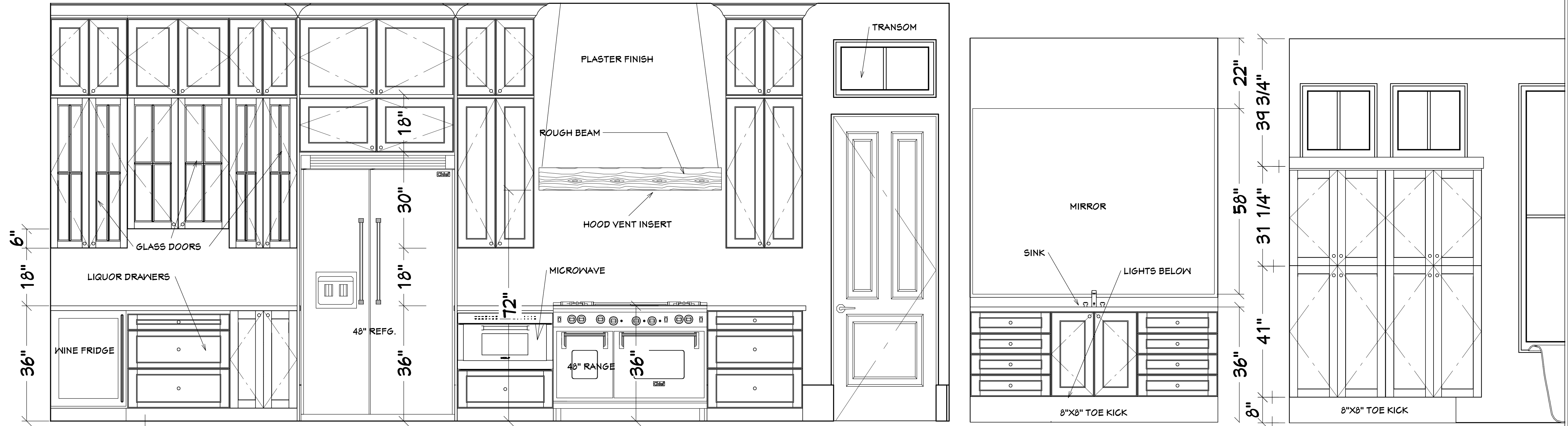


S. F. Electrical Plan View
scale 1/4"=1'-0"

800 Wilcrest suite 120
Houston, Texas 77042
PH. 713-789-8262
CELL 713-806-1498



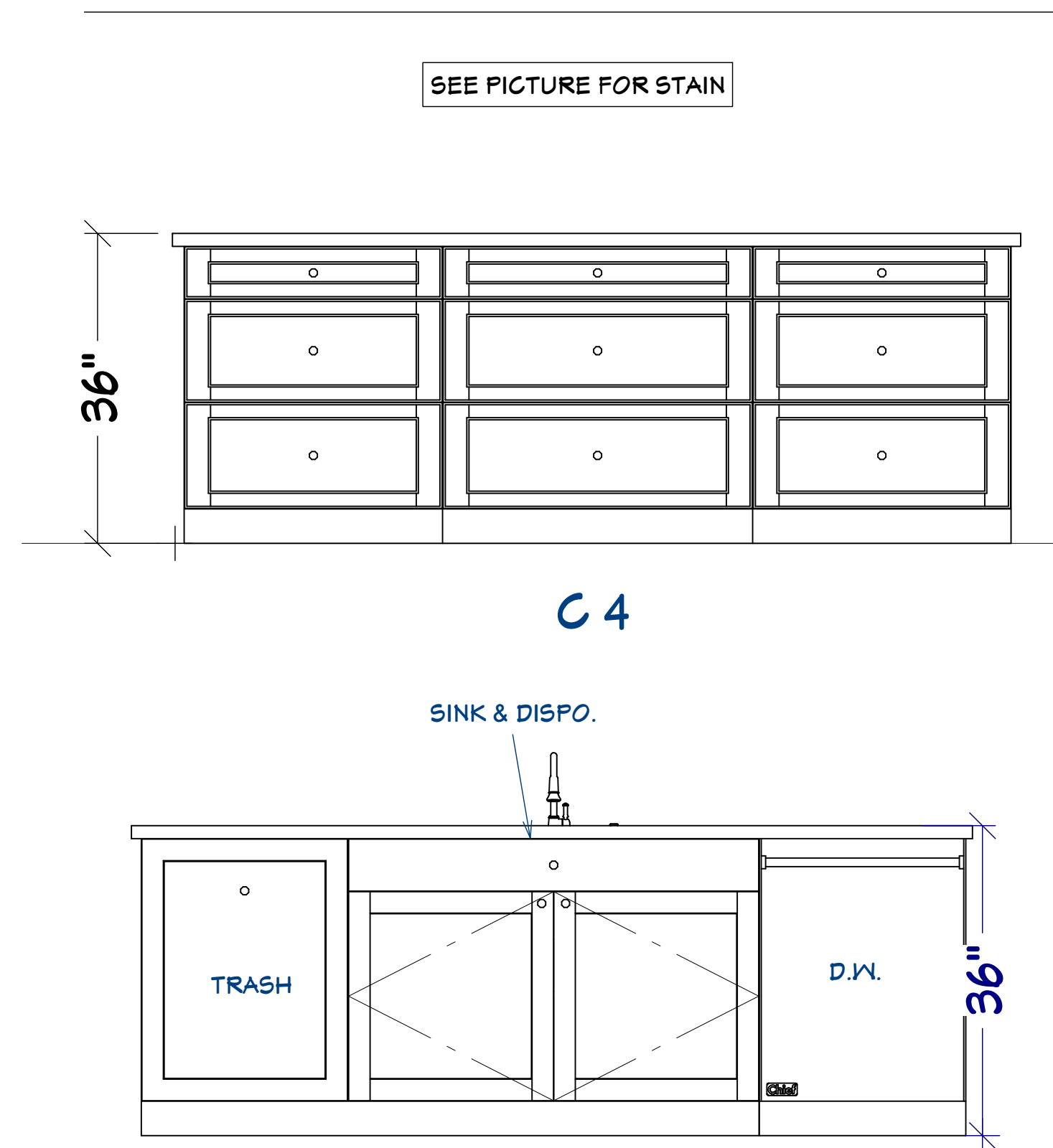
REVISIONS	DATE
Revision #2	8-21-2020



C 1

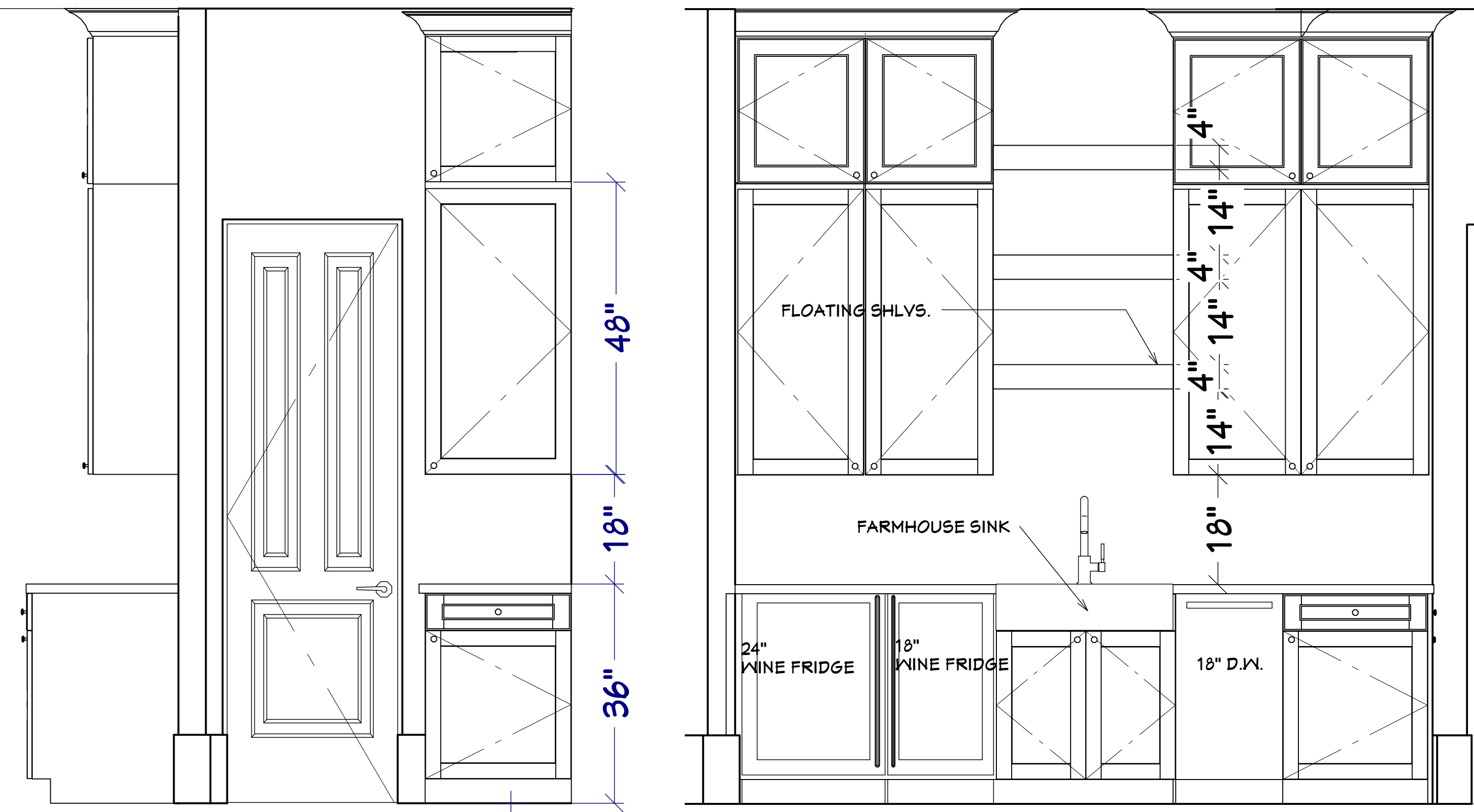
C 12 (both sides)

C 13

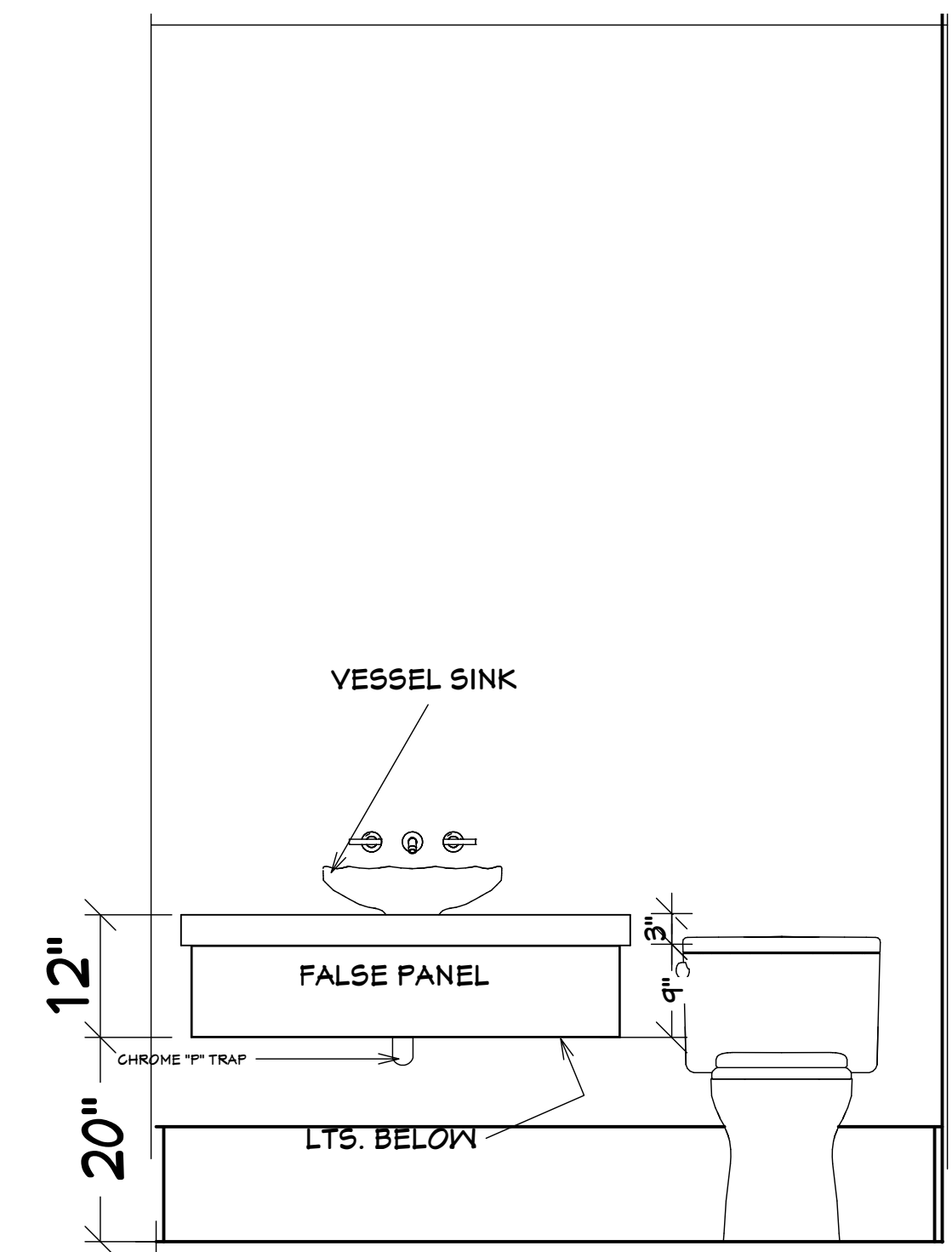


C 4

C 2



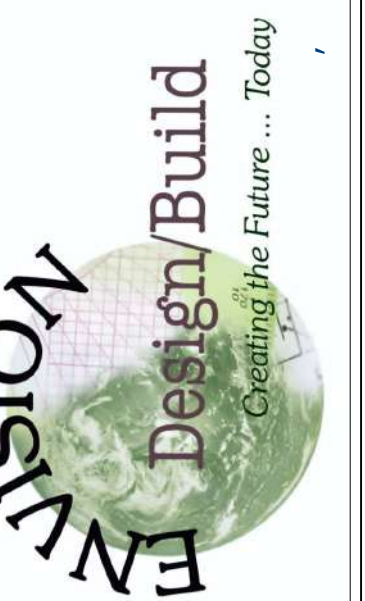
C 3



C 9

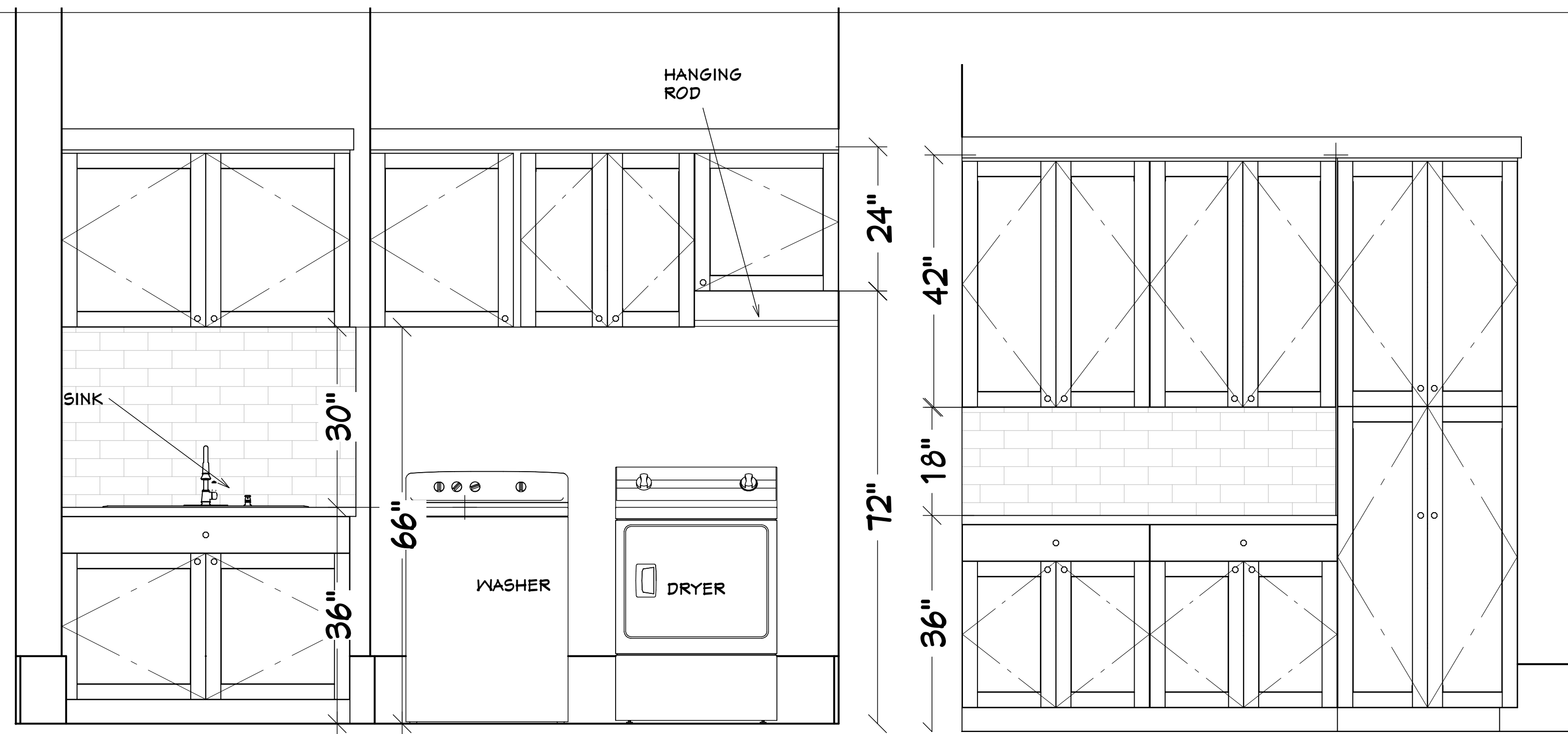
interior cabinets
scale 3/4"=1'-0"

800 Wilcrest suite 120
Houston, Texas 77042
PH. 713-789-8262
CELL 713-806-1998

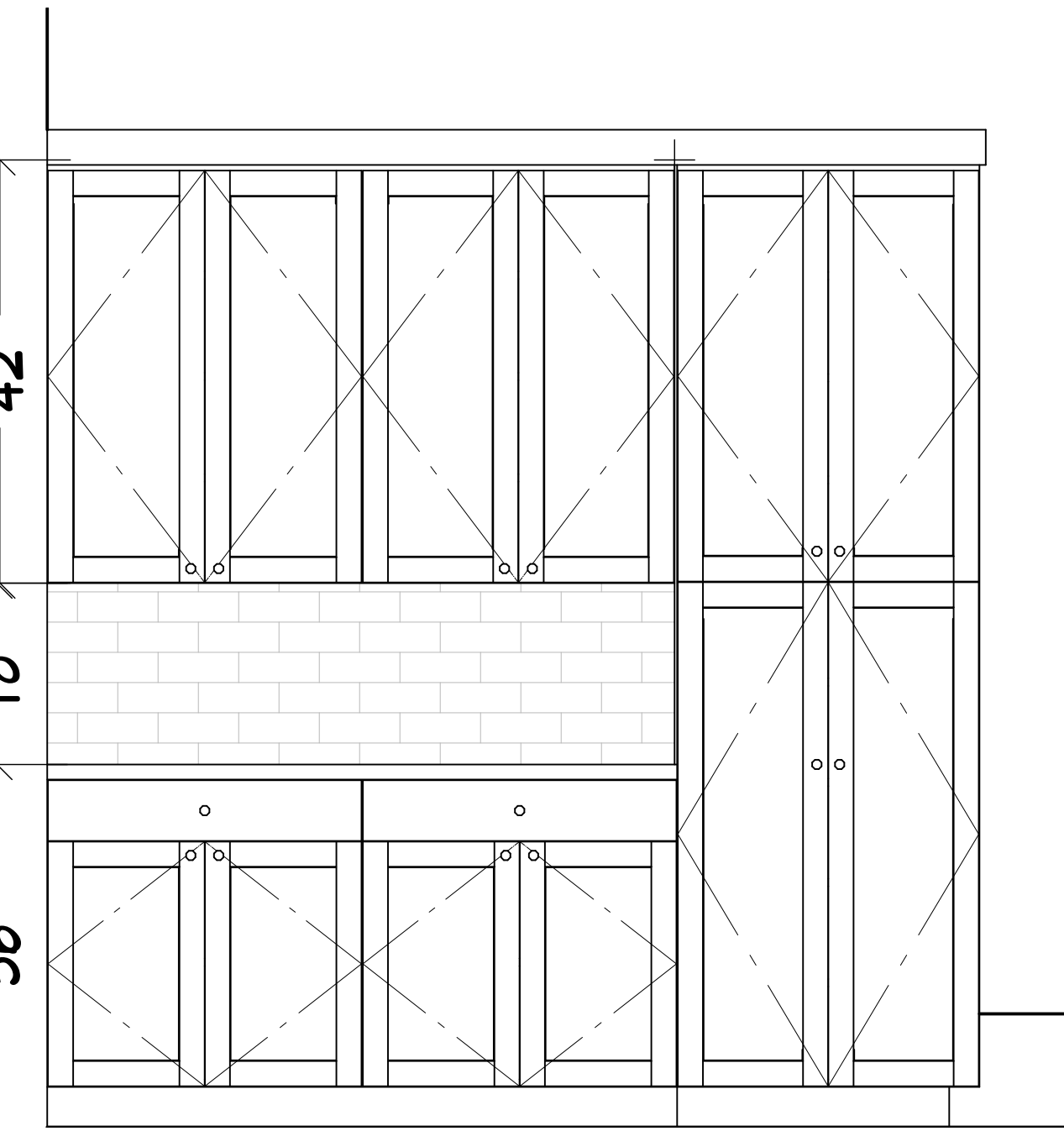


DATE
8-21-2020

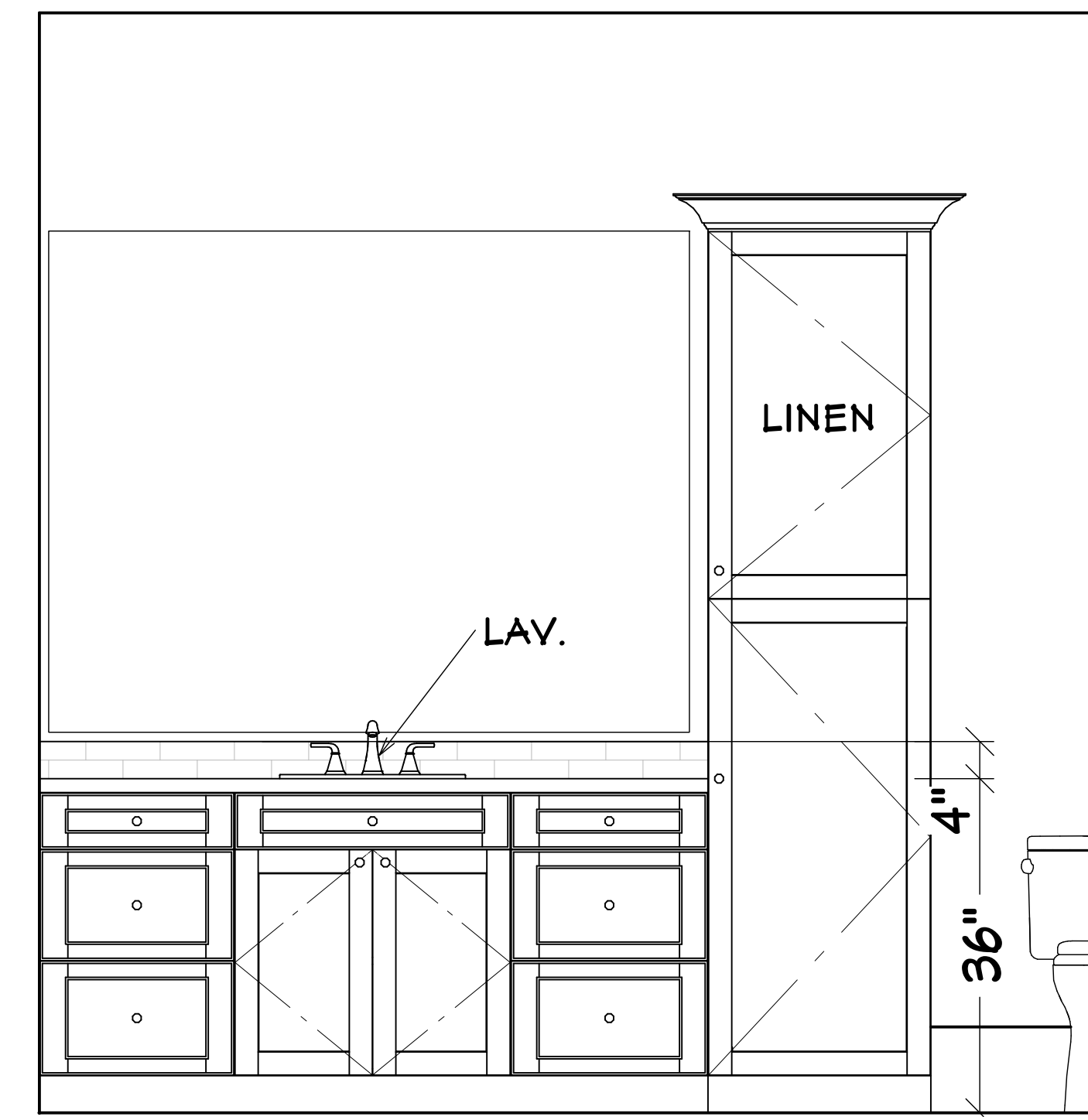
REVISIONS
Revision #2



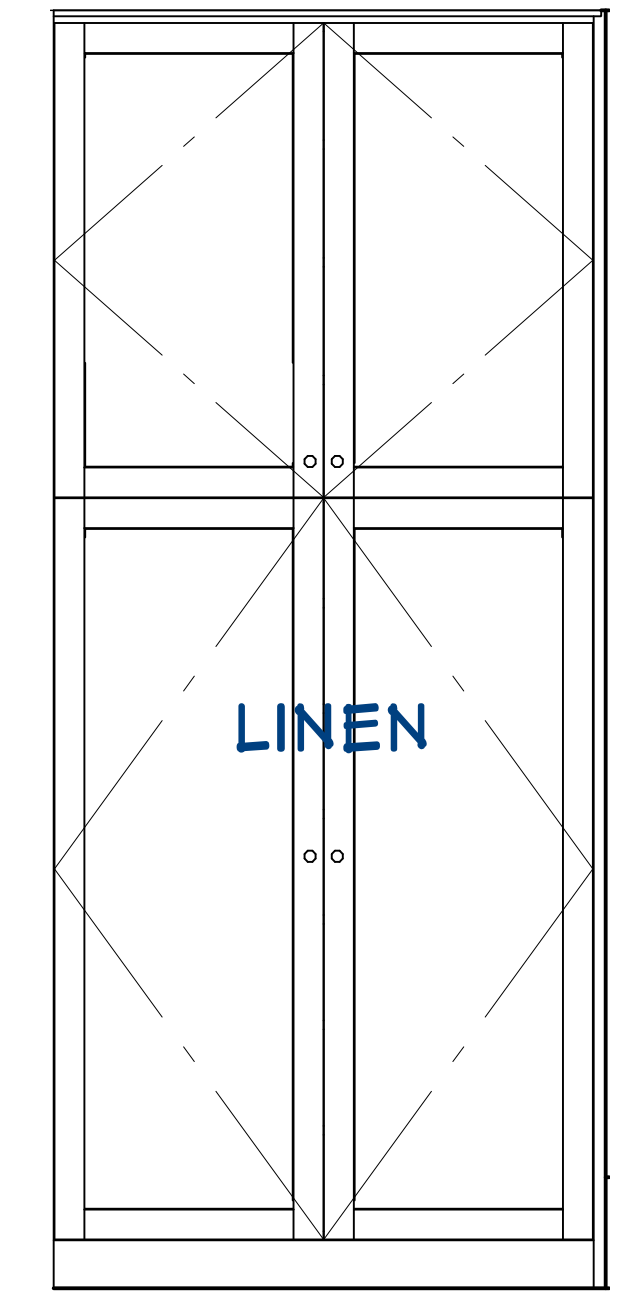
C 10



C11

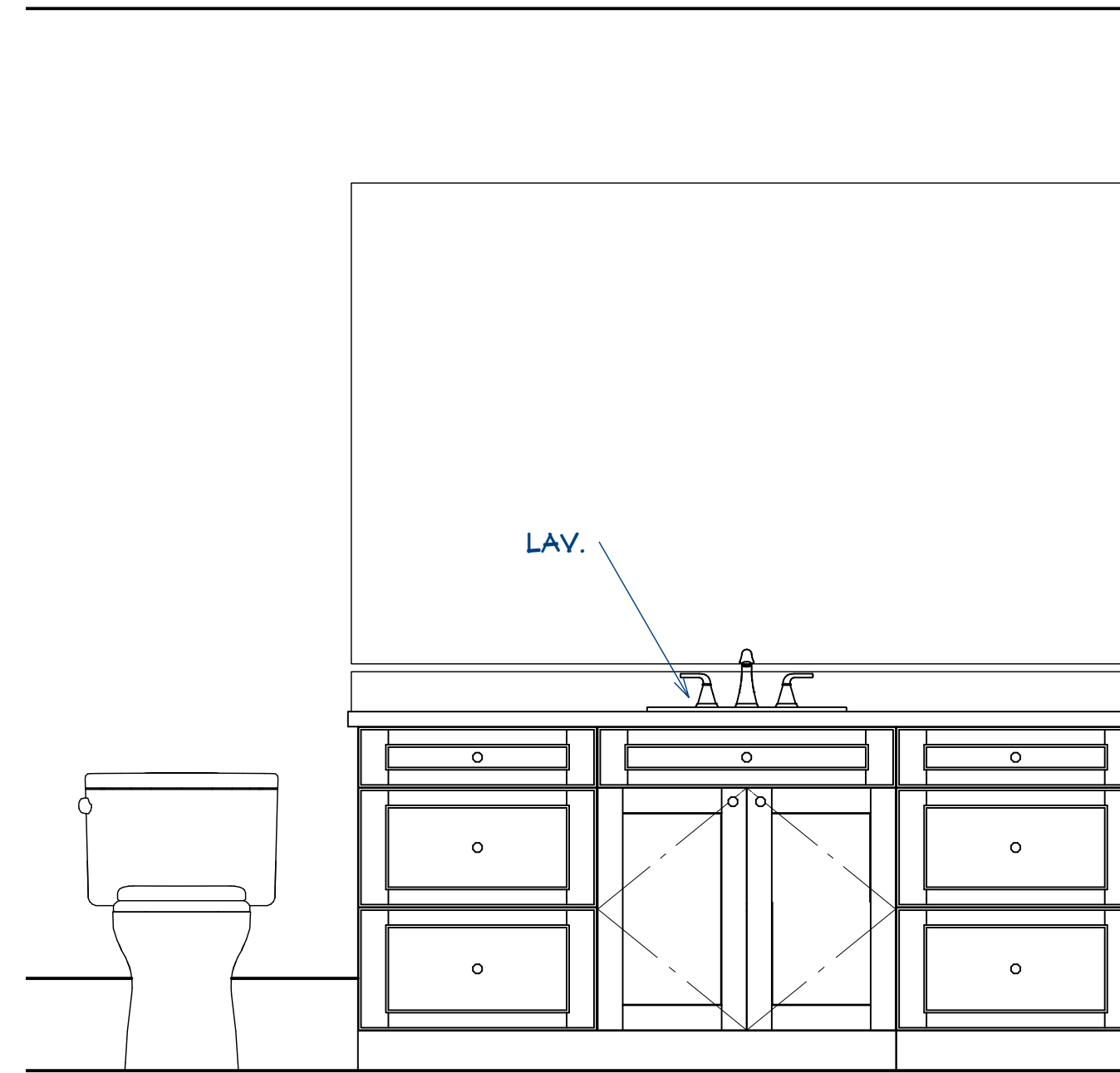


C 14

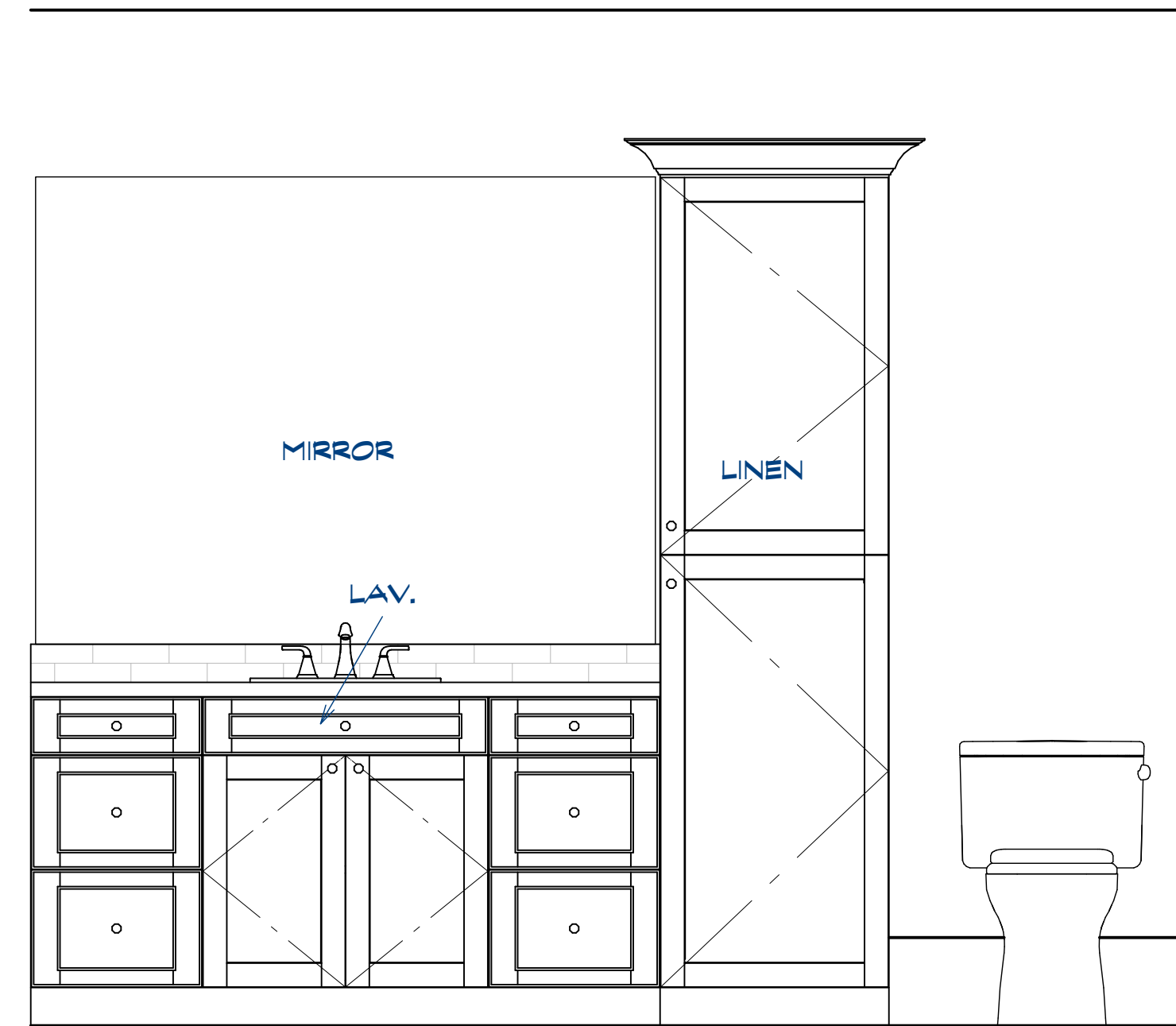


C 17

interior cabinets
scale 3/4"=1'-0"



C 15



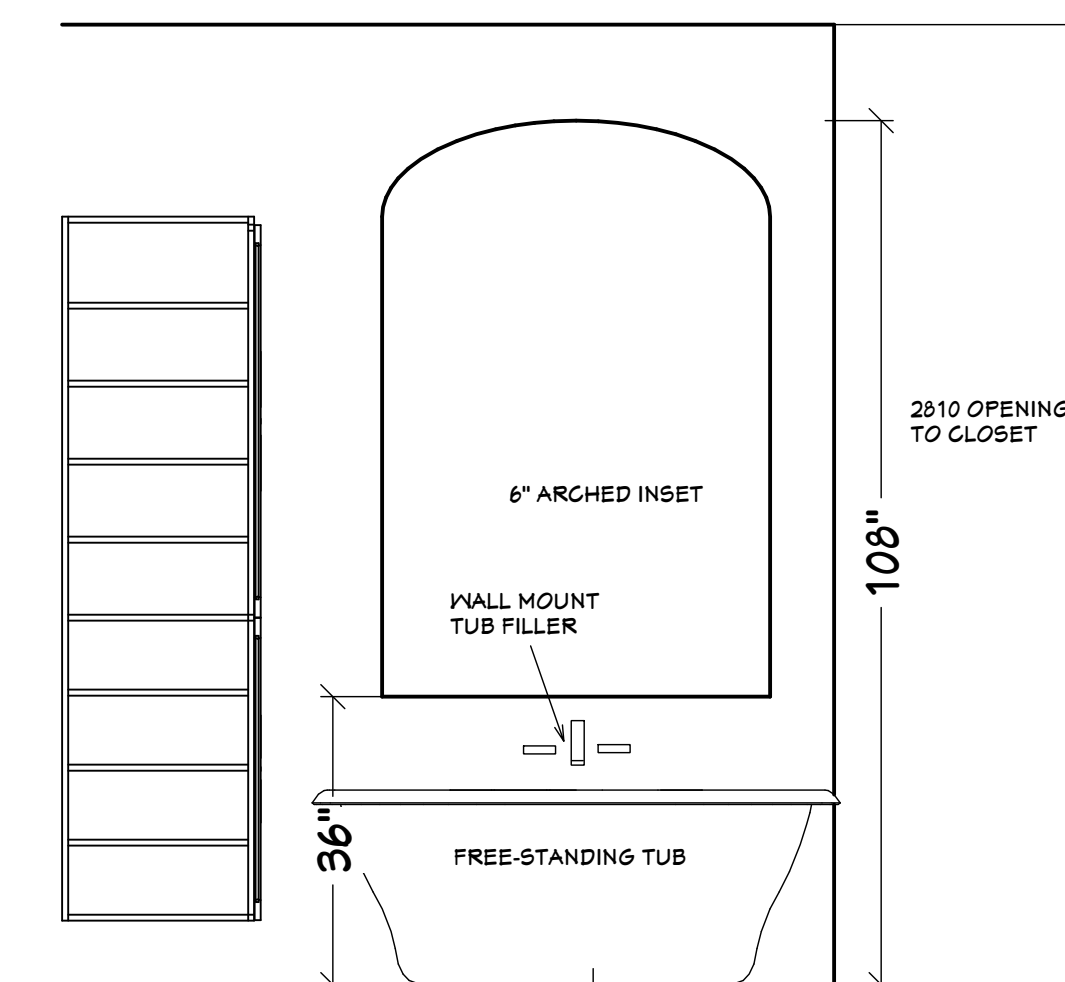
C 16



Elevation 17 no scale



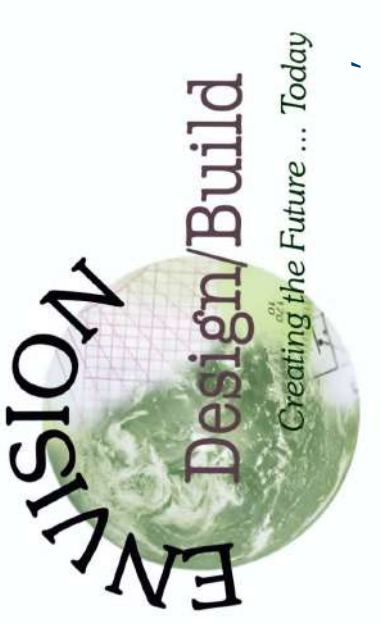
Elevation 19 scale 1/2"=1'-0"



Elevation 18 scale 1/2"=1'-0"

Date:
12-20-2020

800 Wilcrest suite 120
Houston, Texas 77042
PH. 713-789-8262
CELL 713-806-1998



REVISIONS	DATE
Revision #2	8-21-2020